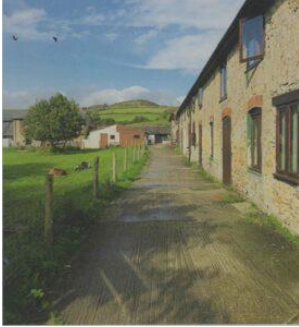
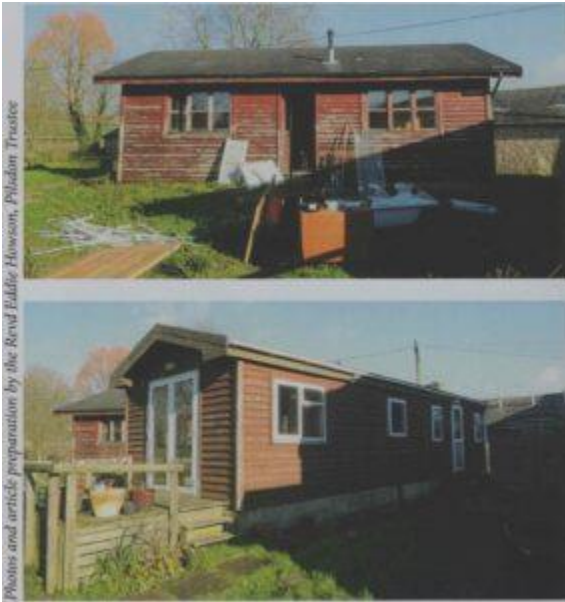


# New Building Project

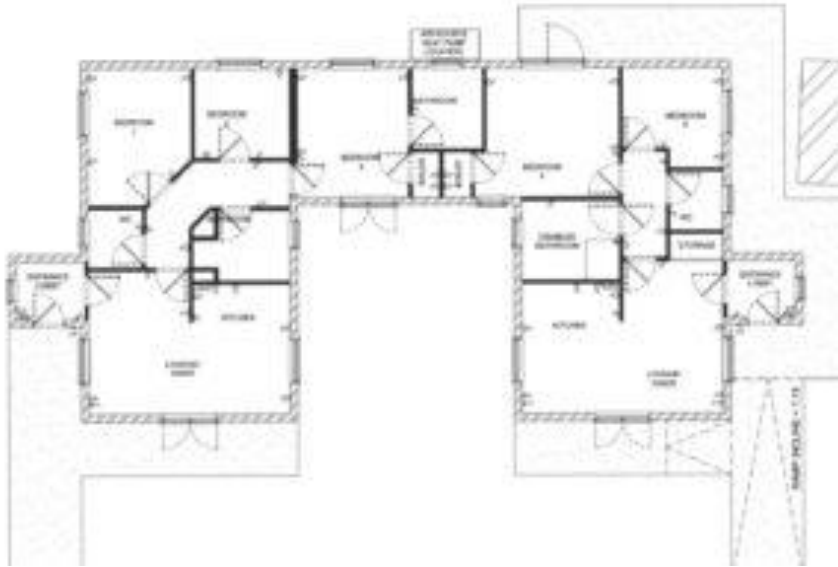


Over many years the Pilsdon Community has done a brilliant job of concentrating on upgrading accommodation for the people who come to share their lives with us. The East Wing single ensuite accommodation has been a great success and Wayfarers are now welcomed into a warm and private space.



We knew we urgently needed to offer better accommodation to those who come to be members as part of the 24/7 leadership team. One log cabin was unfit for habitation and was condemned two years ago. The other, a static caravan, was old, leaky, draughty and environmentally way below the standards we should be offering to people who are exploring membership here.

In June 2021 we finally received planning permission for this U-shaped building with two or three units of flexible accommodation, and began work in February 2022. The new building will make best use of the land, is much more in keeping with its surroundings, is environmentally friendly and will enhance the lives of those who come to serve the community. Heated by an air source heat pump it will not use fossil fuels and much of the electric running cost will be met by photovoltaic panels on the roof (for which we have received a Low Carbon Dorset grant). The building itself is built with very good insulation. The plans below give an idea of the layout, offering versatile accommodation for members and their families.



**As you may know, there are only three of us in the leadership team at present. Though we are in good heart, we know this is unsustainable long term, so it is a priority that we attract more people to share this wonderful life with us by improving the accommodation we can offer.**

## Fundraising

Our trustees and friends of the community are fully supporting the project and have taken the lead in raising funds to ensure the project proceeds.

- We began with a generous legacy of £172,000 from Valerie Smith, a distant relative of our founder, Percy Smith, who had lived close to us in Seaton. we have approached various charitable trusts.
- The trustees have added so far £30,000 from our reserves.
- We appealed to our friends and supporters in faith and have been amazed by your generosity in donating a further £37,500
- We are also extremely grateful to a number of charitable trusts who have seen the value of our work and supported us with a further £122,280 in total

The Alice Ellen Cooper-Dean Charitable Foundation

The Inlight Trust

The G F Eyre Charitable Trust



**European Union**  
European Regional  
Development Fund

We are very close now to the total needed and would welcome any further donations to help us over the line.

**Please do contact me if you have any questions or would like more information: 01308 868308 or [suelangdon@pilsdon.org.uk](mailto:suelangdon@pilsdon.org.uk). Thank you so much.**

*The Revd Sue Langdon, Pilsdon Community Warden*

